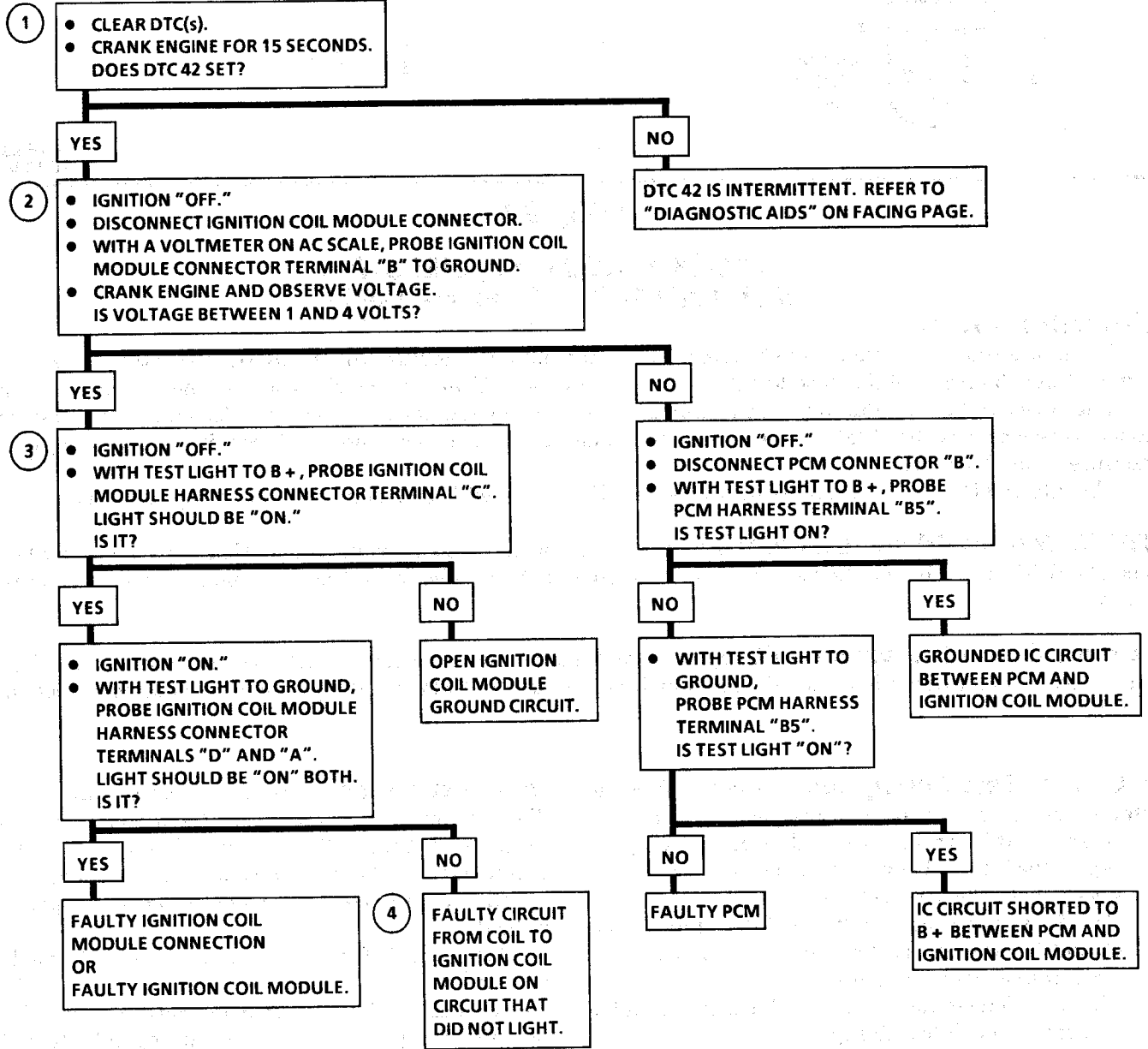


DTC 42

IGNITION CONTROL (IC) CIRCUIT (SHORTED OR GROUNDED CIRCUIT) 5.7L (VIN P) "F" CARLINE (SFI)



"AFTER REPAIRS," REFER TO DTC CRITERIA ON FACING PAGE AND CONFIRM DTC DOES NOT RESET.